

Cw Decoder Logic v1.0.0.5

Changelog:

1. Add station selection on waterfall.
2. Fixed program stability.

Cw Decoder Logic v1.0.0.4

Changelog:

3. Add auto squelch function.
4. Add smart auto tracking function.
5. Ignore spicks.
6. Increased decoder sensitivity and accuracy.
7. Add speed limitation function for low and high speed. Look: Menu / Configuration / CW tab.
8. Real time speed detection.

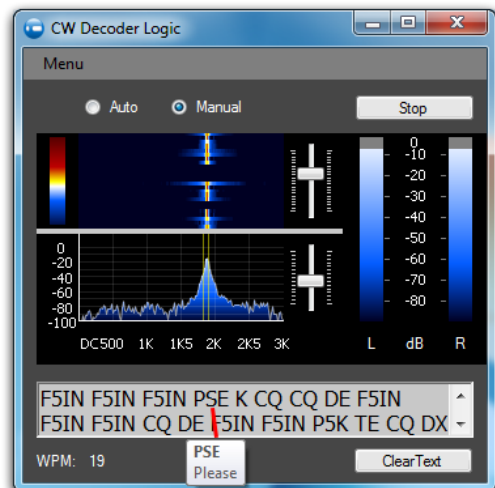
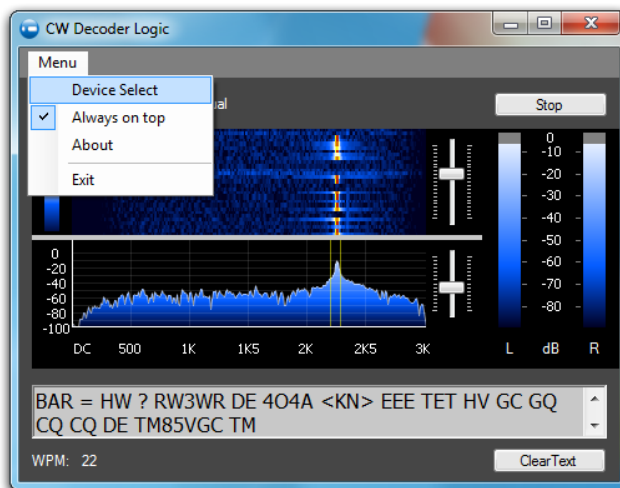
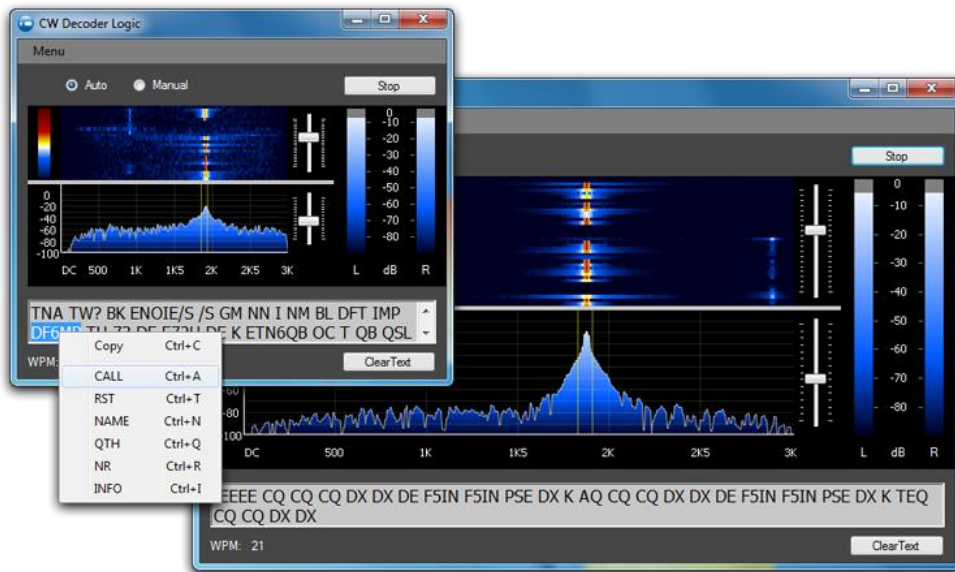
Cw Decoder Logic v1.0.0.3

Changelog:

1. Increased decoder sensitivity and accuracy.
2. Increased program speed due to code optimizations.
3. Remember all last program configuration: windows position, size, selected device, auto manual modes, windows waterfall / spectrum splitter position, contrast and levels.
4. Interface modification.
5. Device selection now in Menu / Device select

Program uses optimized narrow 80 Hz DSP filter for 5 – 60 WPM speed.

Few screen shots:



Cw Decoder Logic v1.0.0.2

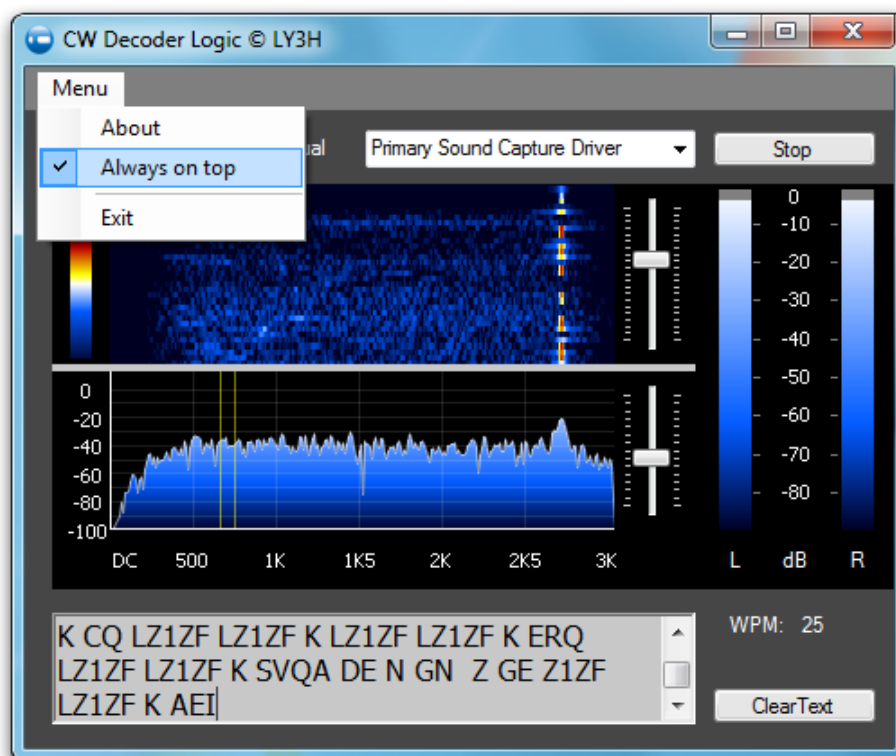
Changelog:

1. Fixed bug with colors and components positions on different Windows versions. Also changing Windows themes now all should be set OK.
2. Fixed flicking on text.
3. Fixed program stability.
4. Added "Always on top" function.

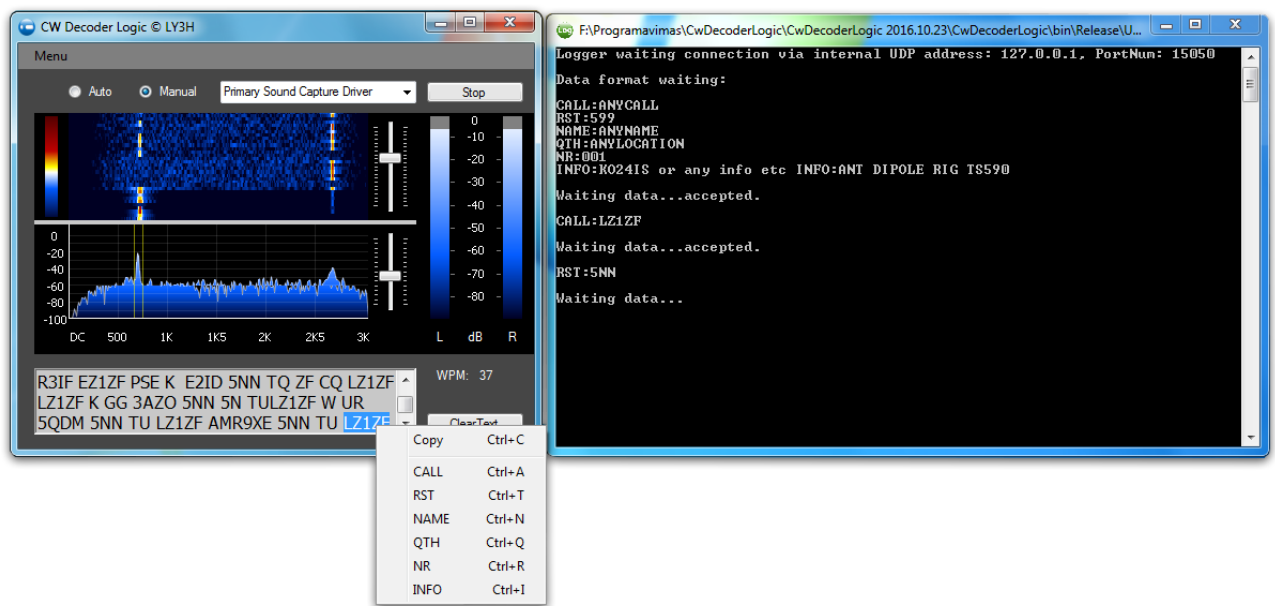
5. Added resize function.
6. Added text selection and copy function.
7. Added possibility to send selected text to external Logger via UDP protocol.
8. Added logger source code example and program for logger developers.
Demo program Start / Programs / LY3H / UDPLogger.exe
Please try it.
9. Replacement of the installation path. Now in Start / Programs / ~~HAM~~ LY3H /

More about everything

“Always on top” function is in Menu



Text selection, copy or send to logger function.



To select a word.

If word is separated with spaces, just double click on it or select manually with left mouse click and drag for selection. If word(s) is selected, right mouse click pop ups the menu. Attention: selected text and menu is active for 3.5 sec. After that time it disappears.

„Copy“ function copies raw text, with spaces, to Clipboard. „Paste“ you can to notepad or logger.

Next items in menu are for logger commands. Selected text formatting without spaces, exception INFO and sending by format:

CALL:ANYCALL

RST:599 (Attention if RST text 5NN or 57N this text is sent without correction to 599 or 579)

NAME:ANYNAME

QTH:LOCATION

NR:001 (Attention if text TT1 this text sending without correction to 001)

INFO:LOCATOR OR ANY TEXT; ANT DIPOLE ETC. (without spaces removing)

All info sending via internal **UDP address: 127.0.0.1, port: 15050**

Cw Decoder Logic – Sender source example:

```

int    portNum = 15050;
string IP      = "127.0.0.1";
string word    = "CALL:LY3H";

byte[] byteSend = Encoding.ASCII.GetBytes(word);

UdpClient udpClient = new UdpClient();
udpClient.Send(byteSend, byteSend.Length, IP, portNum);

```

UDPLogger – Listener source code:

```

using System;
using System.Text;
using System.Net.Sockets;
using System.Net;

public class TCPLogger
{
    private const int portNum = 15050;

    public static int Main(String[] args)
    {
        bool done = false;

        UdpClient listener = new UdpClient(portNum);
        IPEndPoint IPEP = new IPEndPoint(IPAddress.Any, portNum);

        Console.WriteLine("Logger waiting connection via internal UDP address: 127.0.0.1, PortNum:
15050 \n\n");
        Console.WriteLine("Data format waiting:\n\n");
        Console.WriteLine("CALL:ANYCALL\n");
        Console.WriteLine("RST:599\n");
        Console.WriteLine("NAME:ANYNAME\n");
        Console.WriteLine("QTH:ANYLOCATION\n");
        Console.WriteLine("NR:001 \n");
        Console.WriteLine("INFO:K024IS or any info etc INFO:ANT DIPOLE RIG TS590\n\n");

        while (!done)
        {
            Console.WriteLine("Waiting data...");

            byte[] getBuff = listener.Receive(ref IPEP);

            Console.WriteLine("accepted.\n");

            Console.WriteLine(Encoding.ASCII.GetString(getBuff, 0, getBuff.Length) + "\n");
        }

        listener.Close();

        return 0;
    }
}

```

Cw Decoder Logic v1.0.0.1 release 2016.10.17 for Windows: Vista sp2, 7, 8, 10.
Program uses **Microsoft .NET Framework 4.5 or higher**. Please install it if requested by setup.

Features:

Speed 5 – 60 WPM

Auto tracking CW signal in 3 KHz range or manually select the station.

Auto speed detection in few msec.

“Tips” feature. If mouse moved on unknown word, tip popups with annotation about this word.

Also familiar words are separated.

For advanced user: In install directory there is a “tips.ini” file.

User can translate content or add new tips if wanted using following format:

“word”,Tab“annotation”;Enter